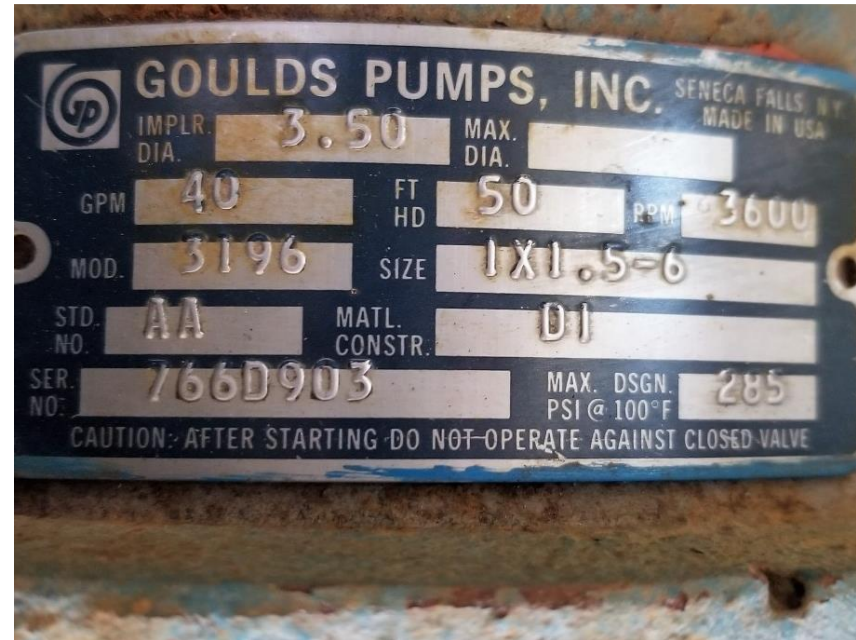
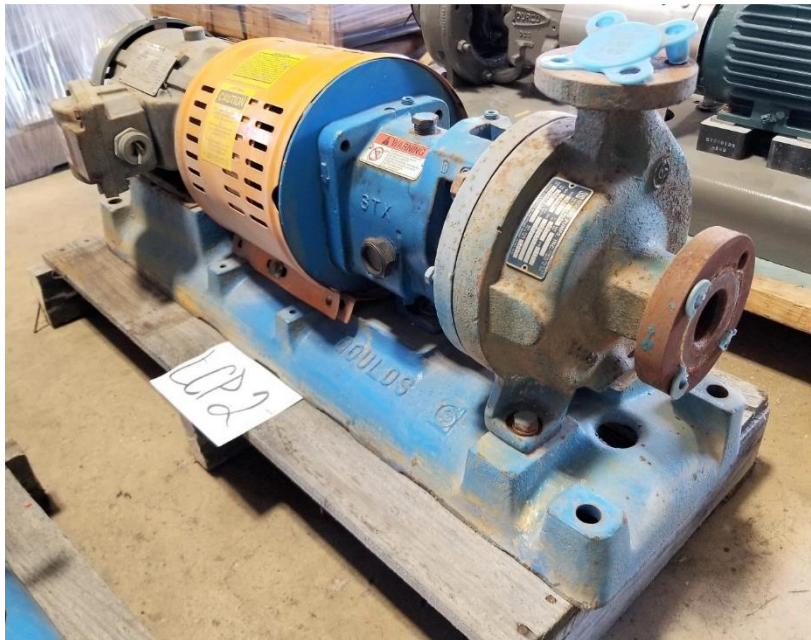
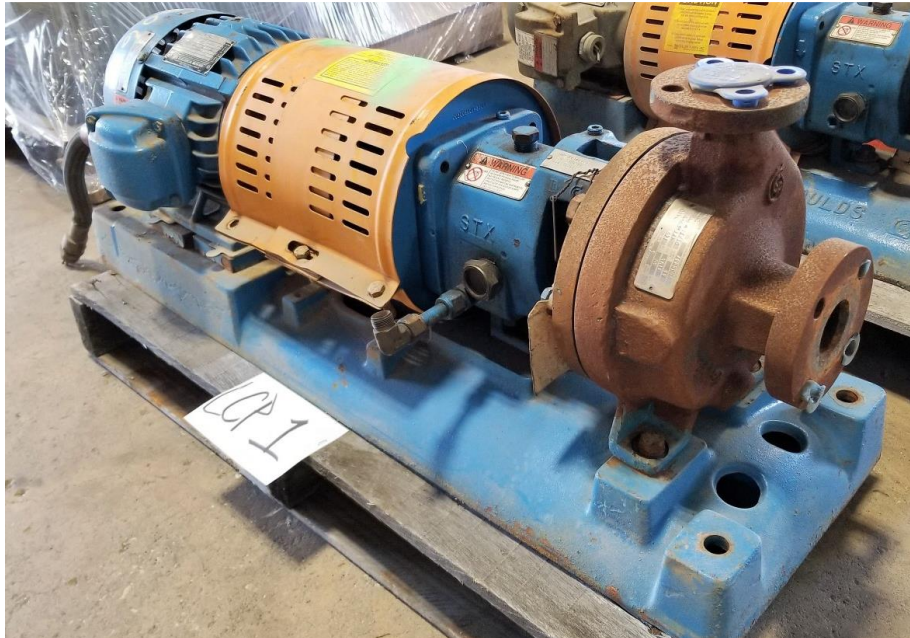
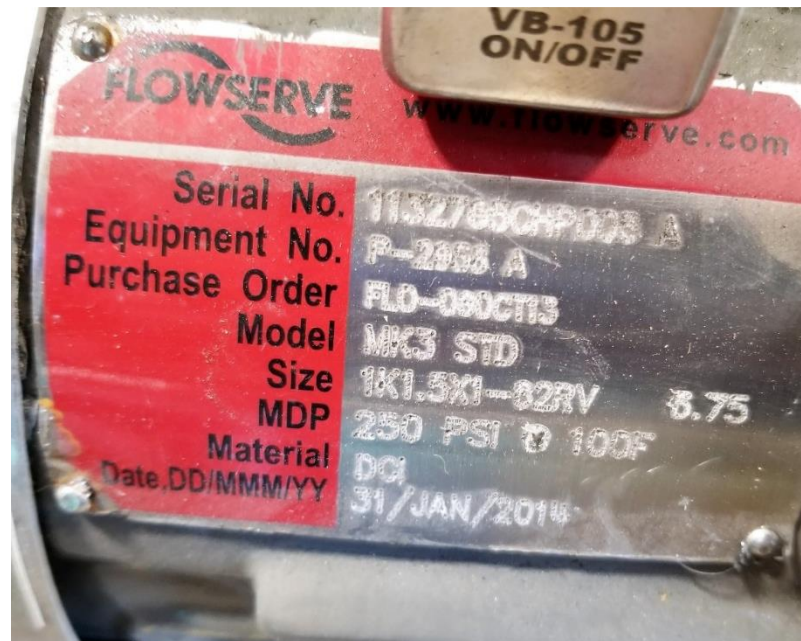


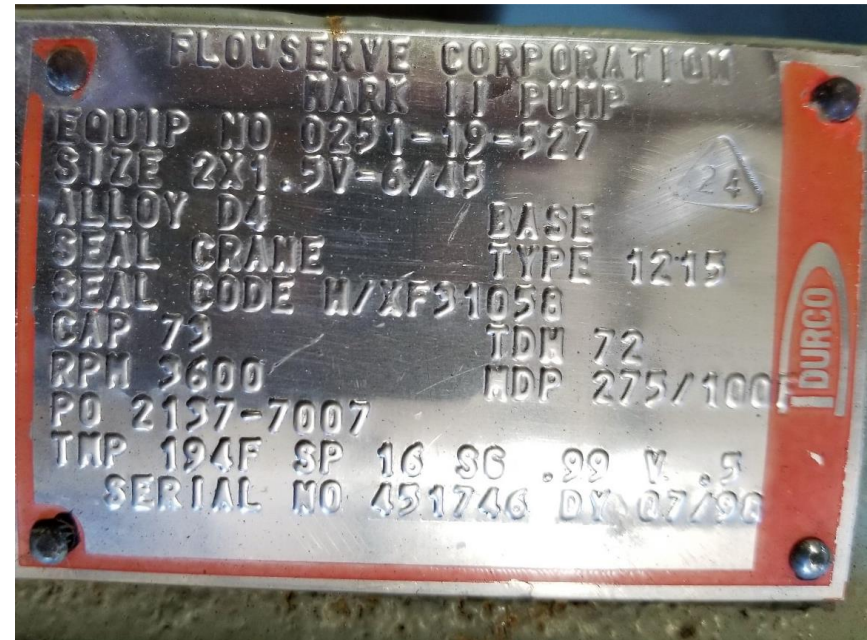
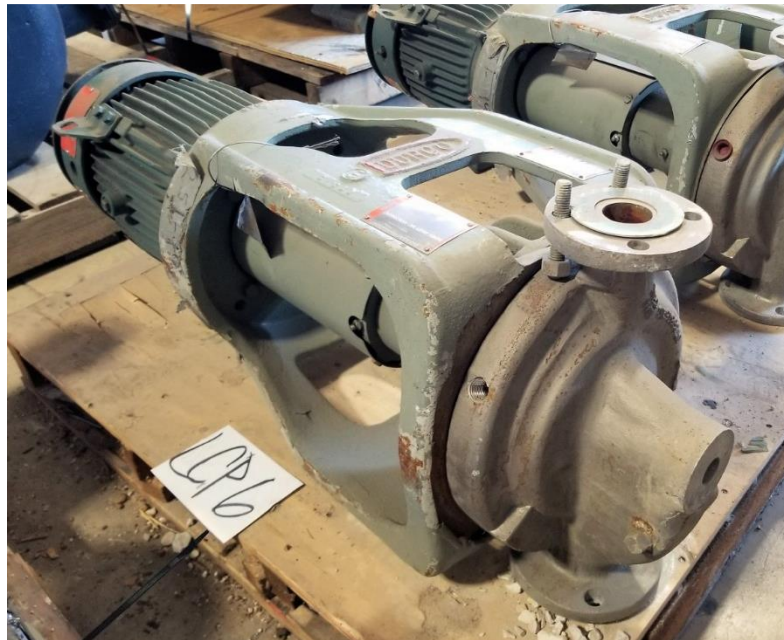
**SLE 18-037 Pumps & Pump Parts Sale**



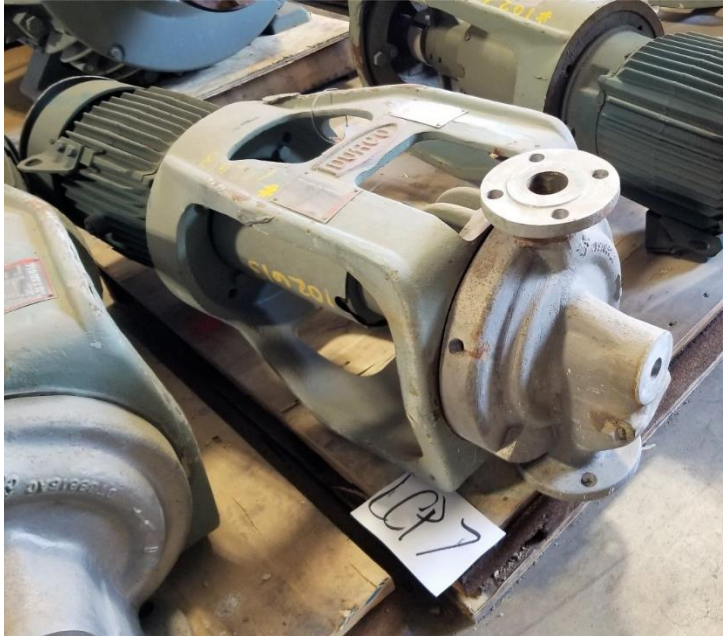
**SLE 18-037 Pumps & Pump Parts Sale**



**SLE 18-037 Pumps & Pump Parts Sale**



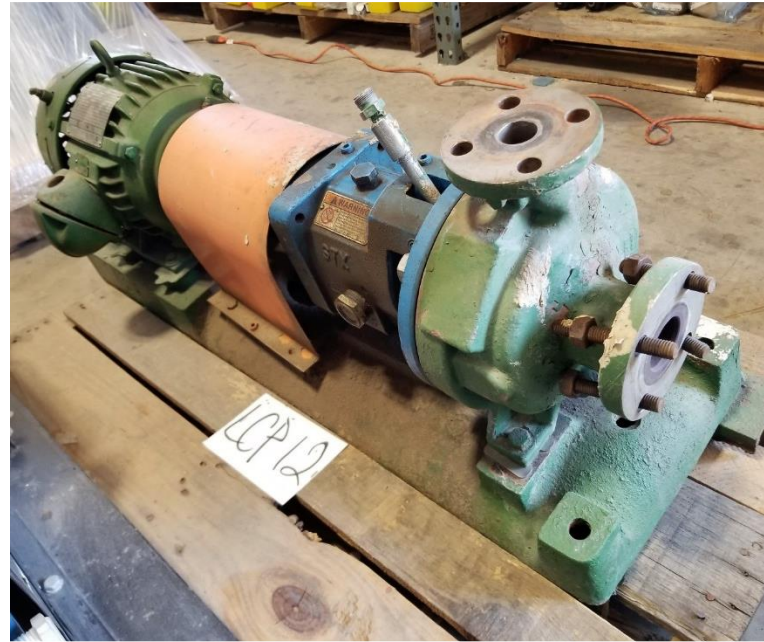
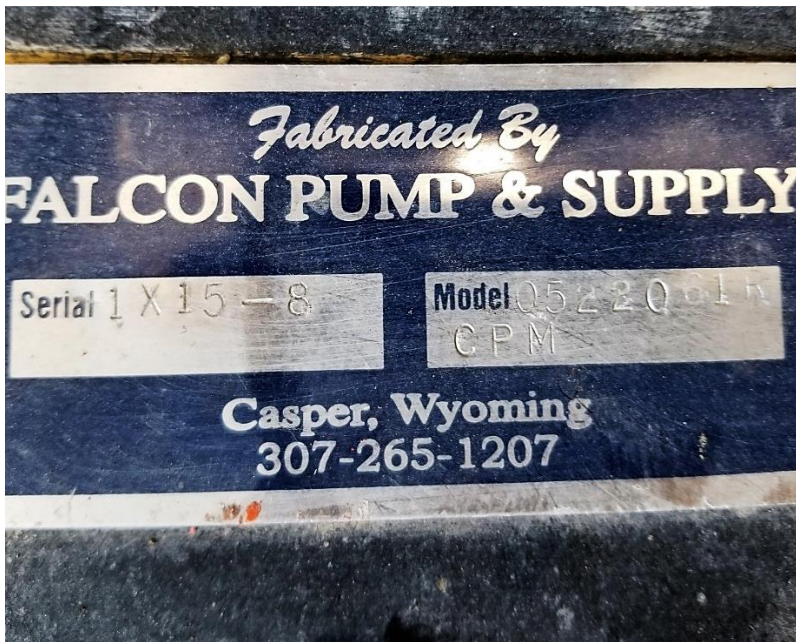
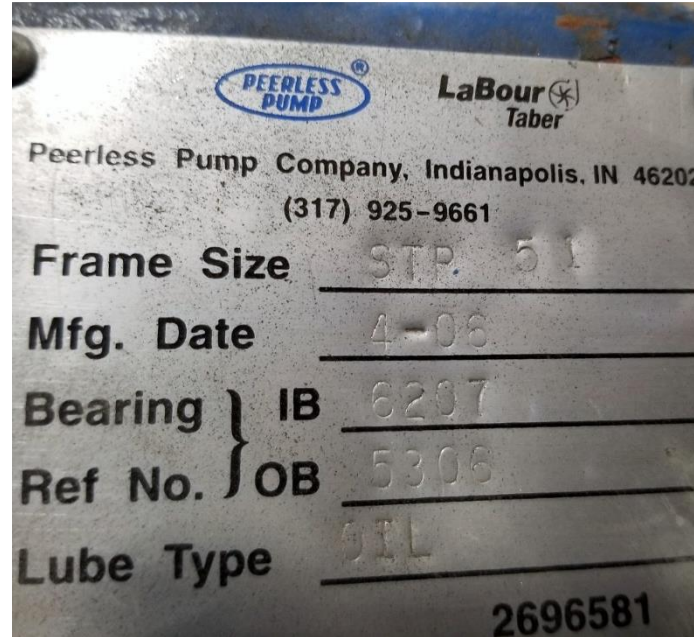
**SLE 18-037 Pumps & Pump Parts Sale**



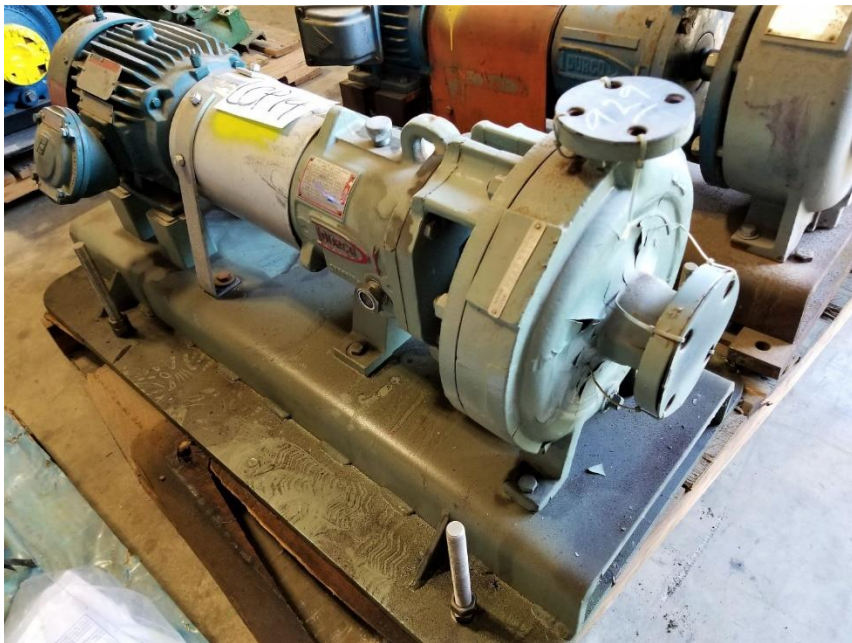
**SLE 18-037 Pumps & Pump Parts Sale**



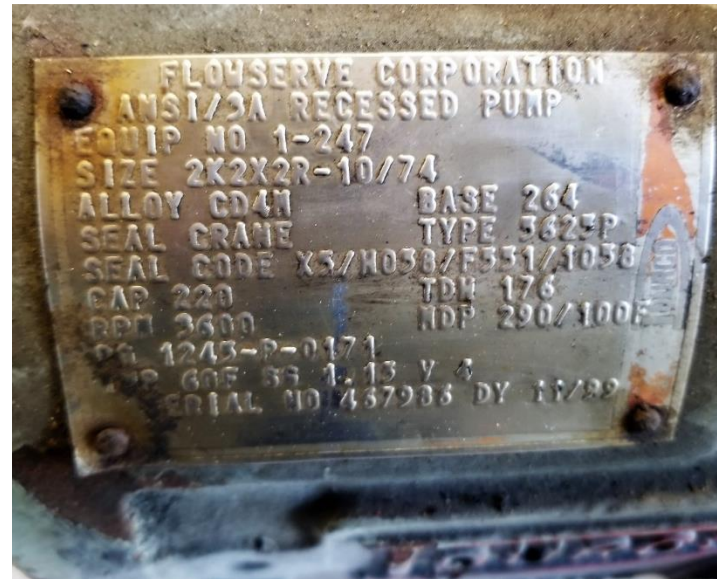
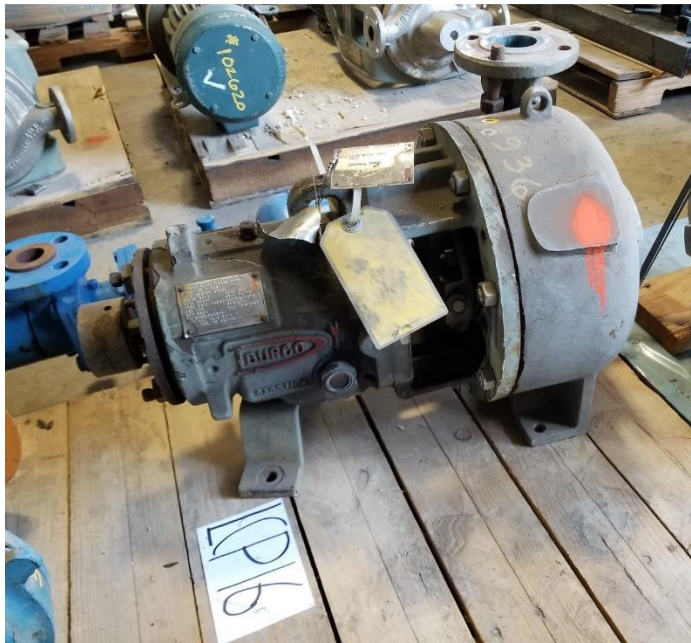
**SLE 18-037 Pumps & Pump Parts Sale**



**SLE 18-037 Pumps & Pump Parts Sale**



**SLE 18-037 Pumps & Pump Parts Sale**

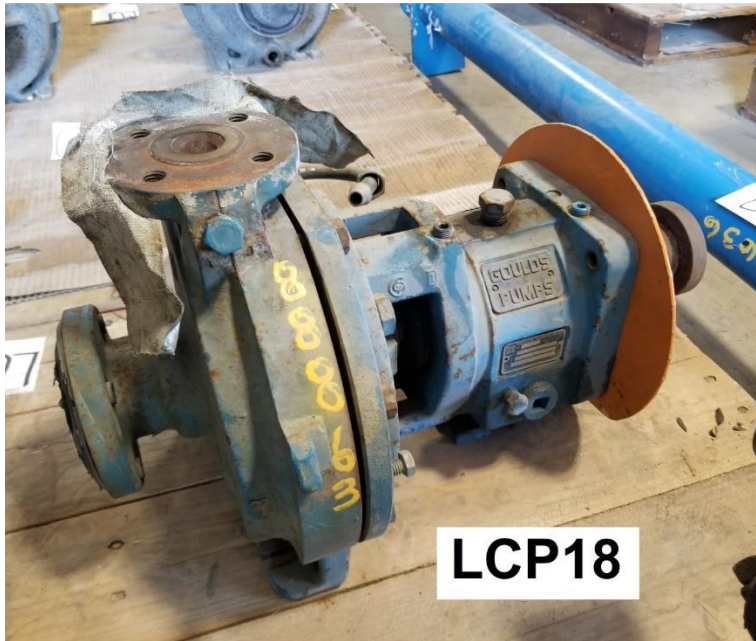




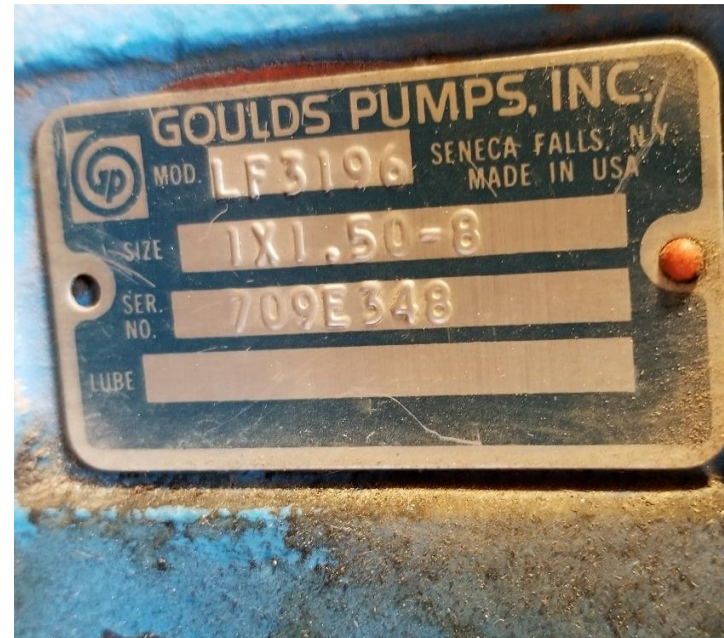
**SLE 18-037 Pumps & Pump Parts Sale**



**LCP17**



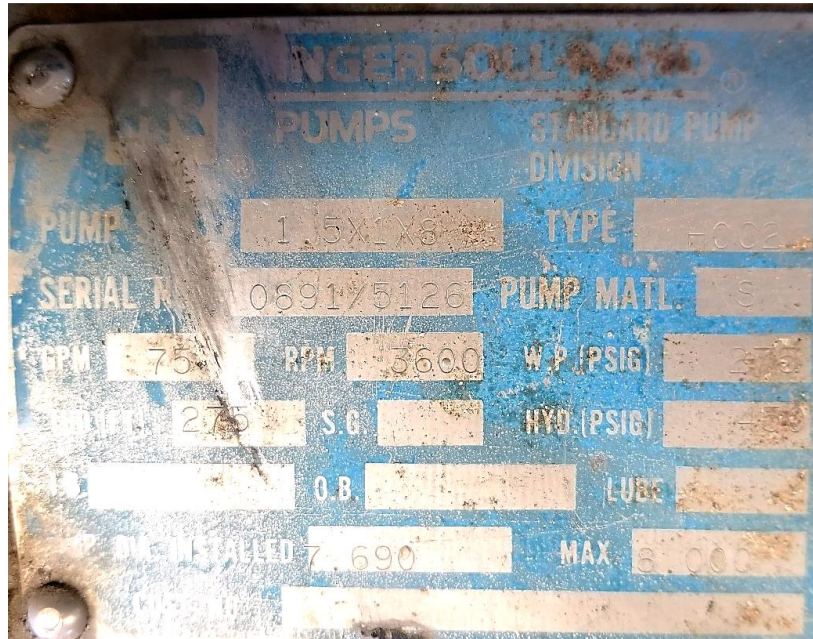
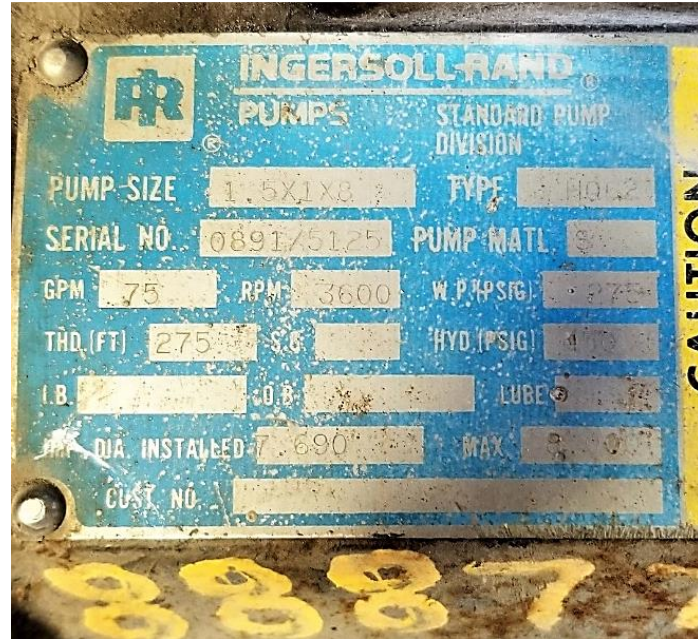
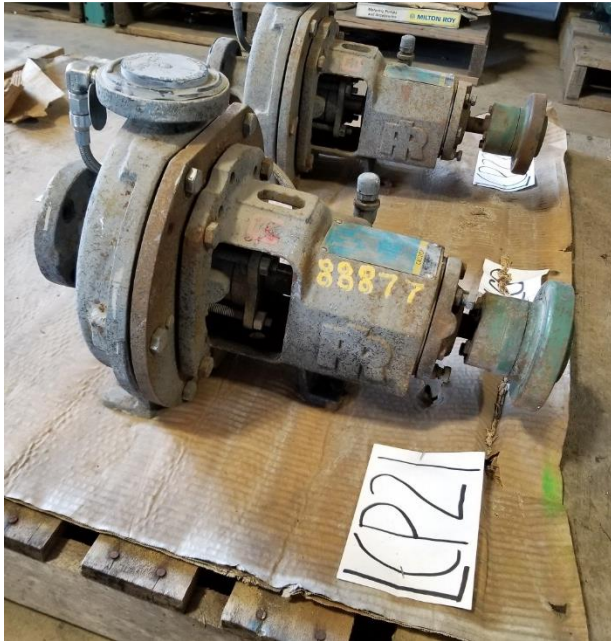
**LCP18**



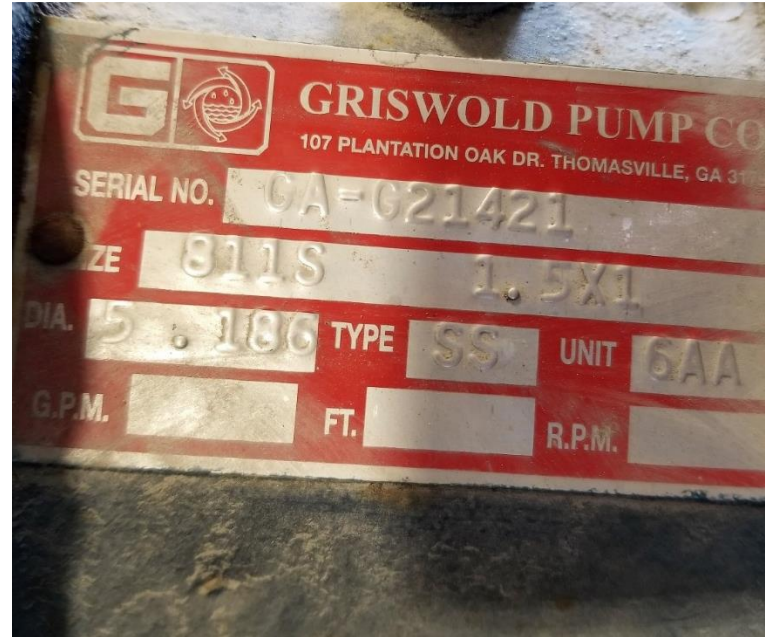
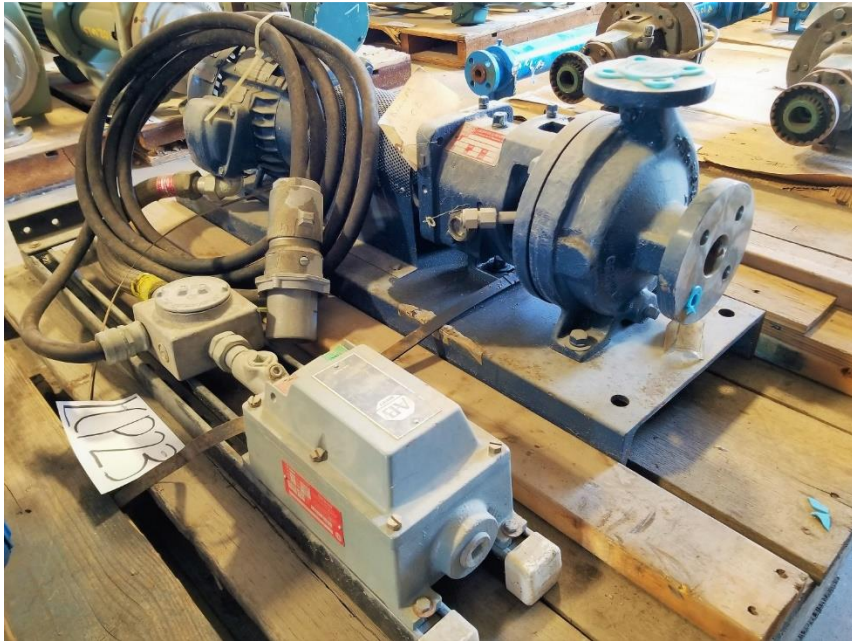
**SLE 18-037 Pumps & Pump Parts Sale**



**SLE 18-037 Pumps & Pump Parts Sale**



**SLE 18-037 Pumps & Pump Parts Sale**



# SLE 18-037 Pumps & Pump Parts Sale



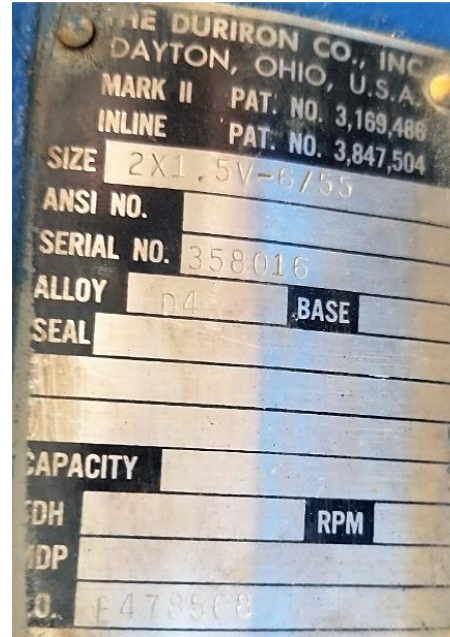
**SLE 18-037 Pumps & Pump Parts Sale**



GOULDS ORDER #	GOULDS PART #.	DATE	WHS
426441	D06628A 1203C	2/08/13	ER
MATERIAL DESCRIPTION		MAT. CODE	
316SS		316SS 1203	
ITEM #	PART NAME	APPROX WGT EA	49.000
100	CASING, 150# RAISED FACE FTMNT		
MODEL	GRP SIZE DESC.	IMP. DIA.	
LF96	STX 1X1-1/2-8 STX		
CUST. PO. NO.	CUST. PART NO.	CUST. JOB.	



**SLE 18-037 Pumps & Pump Parts Sale**



# SLE 18-037 Pumps & Pump Parts Sale

